

May 3-5, 2019
PORTLAND, OR

ASSEMBLY

A CO-AUTHORED
SOCIAL PRACTICE
CONFERENCE



All events are free
& open to the public

**ART
+ SOCIAL
PRACTICE**
Portland State University



Organized by the
Portland State University
Art and Social Practice MFA Program

Catalog illustrations were created by Harrison Park School students in response to proposed Assembly projects. Illustrations by: Joey Rong, Vanessa Cenicerio, Breanna Cressy, Mikaela Felton, Chloe Lindsey, Eli Johnson, Robert Vo, Victoria Enriquez, Rebecca Culp, Anita Zhuchenya, Bento Abdullahi, Kylee Mahoney, Chloe Fung, Atziry Zambrano-Pech, Jastise Navarro, and Angelique Bangoy.

CONTENTS

- 4 Welcome
- 5 Presenters
- 6 Map
- 7 Schedule
- 8 Projects
- 19 People & Places
- 23 About

Welcome to the 6th edition of Assembly!

Every year the PSU Art and Social Practice MFA cohort endeavors to create a "conference" that presents socially engaged art and offers a forum for discussion around the field of Social Practice.* To create the conference, students select various site(s) around Portland in which to make projects, either through existing relationships, curiosity, or chance encounters. Through the lens of the conference, students are asked to learn, meet, see, do, connect, create, discuss, and ultimately produce some sort of publicly digestible experience that either is or is the result of a socially engaged practice. In our three years in the program, this has led us to many places around the city, including a community center, a school, a river, a gymnasium, a club, a senior center, and beyond. This year, we have been developing projects along a corridor that begins at Mt. Scott Community Center and heads north along SE 82nd Ave to the Jade District at the intersection with SE Division St.

Assembly subverts conventional academic structures and expectations around making and learning: it is off campus, outside of the classroom, and in dialogue with audiences and collaborators who are not necessarily artists or typical art viewers. The experience reinvigorates art's relationship to life and life's relationship to art. In this way, the framework encourages students in the program to form new relationships, to engage with new issues and to generate diverse strategies for collaborative art-making. The results can be a walk in the woods, a shared meal or a community dialogue among many other forms.

Assembly's framework is not without its challenges. This year's gathering is sited in one of Portland's most diverse neighborhoods, one that few people realize is actually closer to the geographic center of Portland than "close-in" areas near downtown. Because this area is facing rapid gentrification, we encouraged each other to engage openly and critically with the difficulties and ethical dilemmas of creating work in an unfamiliar context outside of many of our personal spheres of contact. We had fervent discussions about artists 'parachuting' into communities and models of best and worst practices of such. We critiqued proposals,

each coming from a different place as we collectively explored social issues, power, immigration, recreation and memory. In this way Assembly happened for us in our classroom as well.

The result is a highly diverse set of experiences in the form of cooperative games, a self-defense class, mindful boxing, a rest, a walk and more. Questions we are asking include: *What is the relationship between work and leisure, between artistic labor and rest? How do personal anecdotes of different places in a neighborhood contribute to a collective history? What does a time capsule for the Arleta neighborhood look like?* On our opening night at Canton Grill, we will serve a tasting menu that examines the role of food in Chinese migration to America. Mt. Scott Community Center becomes a context in which to explore recreation from differing perspectives in tandem with the launch of the next issue of Social Forms of Art (SoFA), our program's journal. The cosmic *Harrison Park School Interplanetary Contemporary Art Fair*, conceived and produced in collaboration with elementary age students at the school, implicitly critiques art world power structures. The *Jim Gion Celebration of Life* at A1 Bird Bath calls a community together to celebrate a beloved figure. And *La Frontera: Una Conversación* looks at the experience of immigration from a highly personal perspective.

We invite you to dive into this weekend of events: participate, ask questions, observe, and reflect. Assembly acts as a sounding board for the many questions that arise in the program, and one that is held in public, with friends, acquaintances, and strangers alike. We look forward to seeing you there.

—Spencer Byrne-Seres, Shoshana
Gugenheim Kedem, Salty Xi Jie Ng,
and Anupam Singh

*Social Practice can variously be described as an approach or field in which artists seek to make work that exists within and for specific communities, and often lives outside of the status quo spaces for art (studios, galleries, museums). The approach emphasizes collaboration, co-authorship, site specificity, and audience specificity, asking over and over again: *who is making the work, where is the work being made, and who is the work for?*

PRESENTERS

Anupam Singh

Artist Matoska

Artist Michael Bernard
Stevenson Jr.

Brianna Ortega

Carlos B. Reynoso

Carlos G. Reynoso

Concepcion Lopez Reynoso

Elijah Turner-Nelson

Elijah Turner-Nelson

Eric John Olson

Imagination Academy

Jordan Rosenblum

Karla Reynoso

KSMoCA

Mudland

Natalie Reynoso

Nola Hanson

Physical Education

Real Food Faux Truck Food Truck

Roshani Thakore

Roz Crews

Salty Xi Jie Ng

Shoshana Gugenheim Kedem

Spencer Byrne-Seres

Stefan Kovatchev

Students of Harrison Park
Elementary School

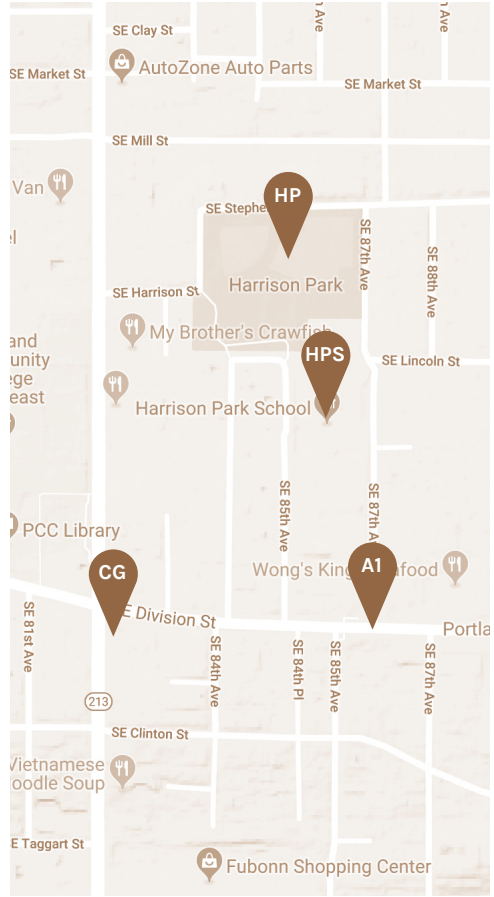
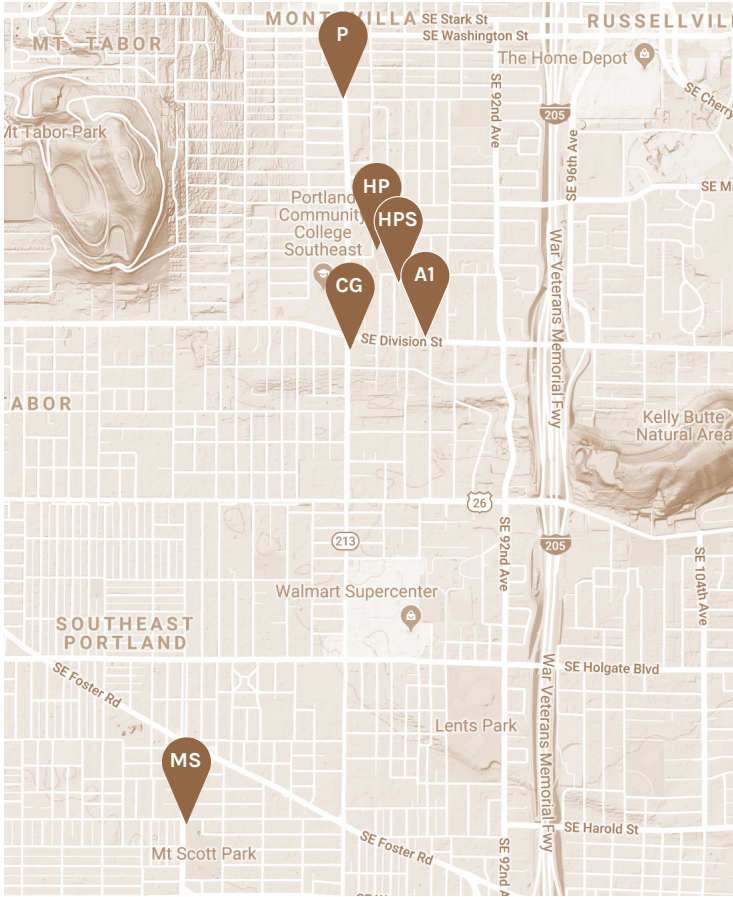
The Living School of Art

Tia Kramer

TINY GALLERY

Zeph Fishlyn

MAP



P Panaderia 5 De Mayo
1134 SE 82nd Ave

HP Harrison Park
1931 SE 84th Ave

HPS Harrison Park School
2225 SE 87th Ave

A1 A1 Birdbath
8560 SE Division St

CG Canton Grill
2610 SE 82nd Ave

MS Mt. Scott Community Center
5530 SE 72nd Ave

SCHEDULE

Friday, May 3rd

At Harrison Park School
2225 SE 87th Ave

4:00–6:00PM
Harrison Park School Interplanetary
Contemporary Art Fair
Sponsored by Imagination
Academy

At Canton Grill
2610 SE 82nd Ave

6:30–8:00PM
Opening Dinner:
Canton Grill Degustatory Research
with Salty Xi Jie Ng and Eric John
Olson

8:00–9:00PM
Karaoke!

Saturday, May 4th

At Mt. Scott Community Center
5530 SE 72nd Ave

Ongoing:
SoFA Journal Launch Party
Hosted by Spencer Byrne-Seres,
Eric John Olson, and Tia Kramer

10:15–10:30AM
Welcome

10:30–11:30AM
Mapping Neighborhood Through
Resident's Personal Stories About
Different Places
Anupam Singh

11:45–12:45pm
Conscious Contact
Nola Hanson with Tia Kramer

12:45–1:30pm
Lunch

1:30–2:30pm
Games People Play
Shoshana Gugenheim Kedem

2:45–3:45pm
Time Capsule: 4,019
Jordan Rosenblum

4:00–5:00pm
Tenant Self-Defense with the Office
of (Speculative) Neighborhood
Zeph Fishlyn and Eric John Olson

5:15–6:15pm
Workshop with Physical Education
Facilitated by keyon gaskin and
Takahiro Yamamoto. Curated by
Spencer Byrne-Seres, Shoshana
Gugenheim Kedem, Salty Xi Jie Ng,
and Anupam Singh

Sunday, May 5th

At Harrison Park
1931 SE 84th Ave

10:30–10:45AM
Welcome

10:45–11:45AM
Scores for Psychological Space
Brianna Ortega, Carlos Reynoso,
and Nola Hanson

At Panaderia 5 De Mayo
1134 SE 82nd Ave

12:00–1:30PM
La Frontera: Una Conversación
Carlos G. Reynoso

Food will be available for purchase

At Harrison Park
1931 SE 84th Ave

1:45–2:45PM
Play & Work
by Brianna Ortega

At A1 Birdbath
8560 SE Division St

3:00–6:00PM
Jim Gion Celebration of Life
with Zeph Fishlyn, Tia Kramer, Eric
John Olson, Artist Michael Bernard
Stevenson Jr, Roshani Thakore,
Stefan Kovatchev, and Artist
Matoska



Friday, May 3rd

4:00-6:00PM
at Harrison Park School

Harrison Park School Interplanetary Contemporary Art Fair

Sponsored by Imagination Academy
With students at Harrison Park School, The Living
School of Art, Mudland, TINY GALLERY, Real Food Faux
Truck Food Truck, Elijah Turner-Nelson, KSMoCA and
Imagination Academy

The Harrison Park School Interplanetary Contemporary Art Fair features artist projects by and for young people that are simply not of this earth. The students at Harrison Park School are hosting invited guests: The Living School of Art, Mudland, Tiny Gallery, Real Food Faux Truck Food Truck, Elijah Turner-Nelson, and KSMoCA, who will be exhibiting work that will expand one's understanding of who should be considered an artist in the contemporary art universe. While some of the artwork is of this earth fair go'ers can expect to see and experience the tastes of otherworldliness.

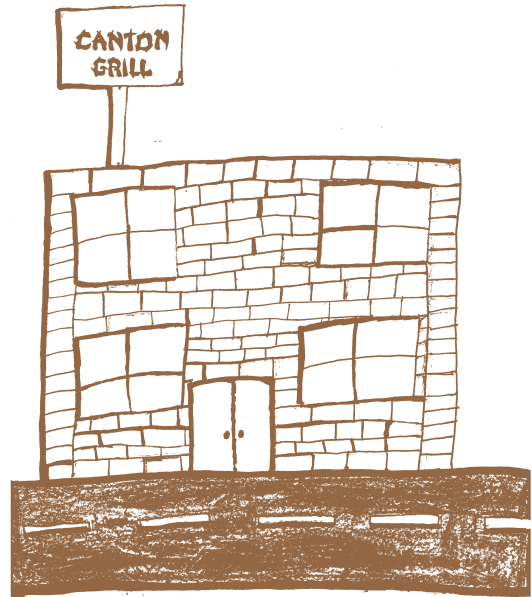


6:30–8:00PM
at Canton Grill

Opening Night Dinner: Canton Grill Degustatory Research

Salty Xi Jie Ng and Eric John Olson

Portland's oldest Chinese-American restaurant, Canton Grill, has prodigiously thrived through the generations with continued resilience and adaptation. Today, Chinese-American food is a hybrid of its own, prepared by chefs from China with their own narratives of adaptation. Investigating both personal and collective histories alongside the role of food in migration, this dinner is a sensorial ten-course tasting experience serving degustatory samples intermingling culinary art, performance, research and personal histories. It promises to be a beautiful, complex, fine dining experience that will tickle your palette and tease your soul. Free of charge. Prior registration recommended. RSVP at <http://tiny.cc/cantongrill> (Please note any dietary restrictions).



8:00–9:00PM
at Canton Grill

Karaoke!

Wind down our first evening with us for karaoke at Canton Grill. Singing encouraged but not mandatory!



Saturday, May 4th

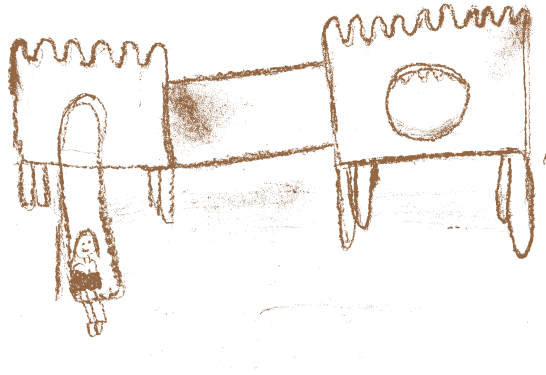


Ongoing

SoFA Journal Launch Party

Hosted by Spencer Byrne-Seres,
Eric John Olson and Tia Kramer.

Look out for the Social Forms of Art pop up reading room, where we are launching the Spring Issue of SoFA! Issue 003 is centered around the notion of recreation, how artists use recreation in their practice, and how artists relax when they are off the clock.

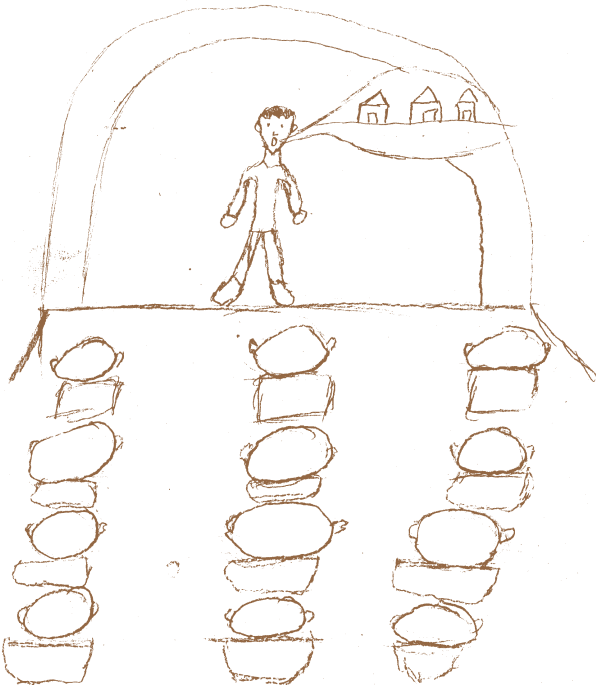


10:30-11:30AM

Mapping the Neighborhood Through Resident's Personal Stories About Different Places

Anupam Singh, Residents of Mt. Scott's Arleta
Neighborhood

This project maps Mt. Scott's Arleta neighborhood through personal stories and anecdotes of the local residents. It also explores the role of personal stories in fostering our sense of belonging in a neighborhood.

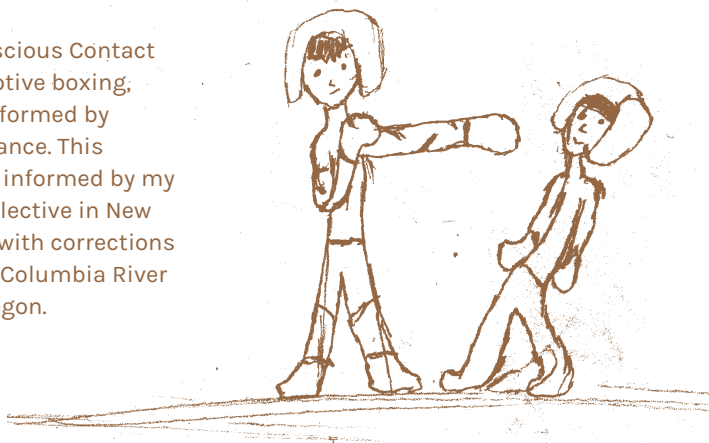


11:45AM-12:45PM

Conscious Contact

Nola Hanson with Tia Kramer

What does it look like to feel safe? Conscious Contact invites participants to experience receptive boxing, an exploratory training methodology informed by traditional boxing and contemporary dance. This performance, part of a larger project, is informed by my ongoing work with the Trans Boxing Collective in New York City and my current collaboration with corrections officers and artists-in-residence at the Columbia River Correctional Institution in Portland, Oregon.



12:45-1:30PM

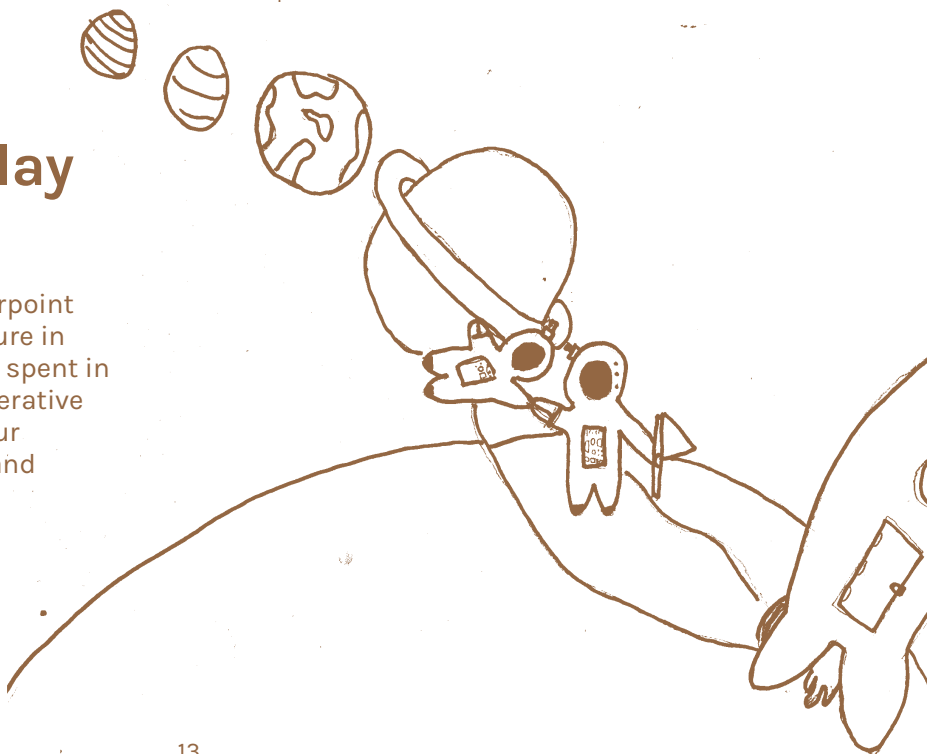
Lunch

1:30-2:30PM

Games People Play

Shoshana Gugenheim Kedem

Cooperative games offer a counterpoint to a competitive recreational culture in America. Our time together will be spent in an interactive exploration of cooperative games that challenge and hone our capacity to listen, problem solve and collaborate. All ages are welcome.



2:45-3:45PM

Time Capsule: 4,019

Jordan Rosenblum

What should future residents know? Using the time capsule as form, this project explores what we believe is most important to communicate to people two thousand years into the future. In creating a time capsule participants contemplate neighborhood and place on an expansive time scale, and the lives of those who may exhume them.



4:00-5:00PM

Tenant Self-Defense with the Office of (Speculative) Neighborhood

Zeph Fishlyn and Eric John Olson

Confused by complicated housing rules? Learn how to take care of yourself in uncertain times! Through a combination of Know Your Rights basics and group exercises, you'll leave with a clearer sense of your power and place in a changing city!



5:15-6:15PM

Workshop with Physical Education

Facilitated by keyon gaskin and Takahiro Yamamoto.
Curated by Spencer Byrne-Seres, Shoshana Gugenheim-Kedem, Salty Xi Jie Ng, and Anupam Singh

Members of Portland-based dance collective Physical Education will lead an interactive dance and movement workshop in the Auditorium at Mt. Scott. Physical Education (P.E.) is comprised of dance and performance artists keyon gaskin, Allie Hankins, Lu Yim and Takahiro Yamamoto. P.E.'s vision is to offer performance audiences, artists of all mediums, and curious individuals immersive methods of engaging with dance and performance. P.E. acknowledges and scrutinizes the perceived illegibility and messiness of the performing body. P.E. organizes and hosts READING GROUPS, LECTURES, curated PERFORMANCES, AEROBICS/MOVEMENT classes, and straight-up sweat-it-out DANCE PARTIES.



Sunday, May 5th



10:30-10:45AM

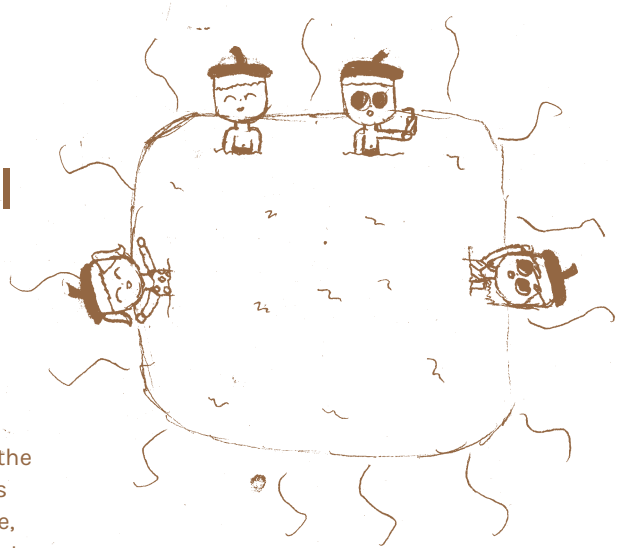
Welcome

11:00AM-12:00PM

Scores for Psychological Space

Brianna Ortega, Carlos Reynoso, Nola Hanson

How do artists create the psychological space that allows them to make art? Can the "external conditions" that the creation of an art project requires become a visible part of the project? Or a work of conceptual art in its own right? Scores for Psychological Space questions the boundaries of art, life, work, and rest, while offering a peaceful pause for both artists and participants between other Assembly projects.



12:00-1:30PM

La Frontera: Una Conversacion

Carlos B. Reynoso, Concepcion Lopez Reynoso, Karla Reynoso, Carlos G. Reynoso, Natalie Reynoso

This project is a collaboration with artist Carlos G. Reynoso and his family who immigrated to The United States in 1987. The project is a conversation expressing family members personal experiences with crossing the border from Mexicali Baja California to Calexico California on their way to Los Angeles. The conversations are available through a zine and will be presented in a short film created by artist Natalie Reynoso.

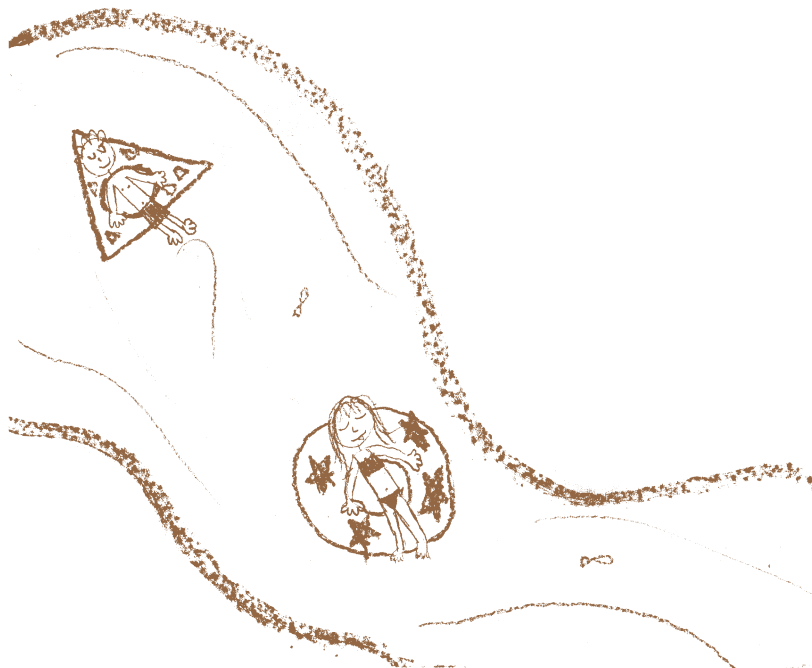


1:45-2:45PM

Play & Work

Brianna Ortega and Students of Harrison Park School

What is the relationship between work, play, and being a child or adult? Have some adults lost joy in the corporatization of work? Can kids' perceptions of play transform our work lives? In this facilitated experience, we will enact scores based off Harrison Park School students' exploration of these concepts.



3:00-6:00PM

Jim Gion Celebration of Life

Zeph Fishlyn, Tia Kramer, Eric John Olson, Artist Michael Bernard Stevenson Jr., Roshani Thakore, Stefan Kovatchev, and Artist Matoska

Join us for a free community event celebrating the life and work of a renowned local sculptor, Jim Gion. Alongside his many public works, Jim sculpted over a thousand portraits of dogs, and we are honoring his legacy with a dog-focused event! Free treats for dogs and humans, pet portraits by Roz Crews, dog photo booth, music, art and more! (Kids also welcome!)



People & Places

A1 Birdbath and Stefan Kovatchev

Stefan Kovatchev has been making bird baths, garden ornaments, fountains, and statues with an emphasis on integrity for 20 years. Everything is made on-site at A1 Bird Bath, which occupies a full acre of land on Southeast Division and has been in business in Portland since 1942.

Anupam Singh

Anupam Singh is a socially engaged artist and educator from Mumbai, India. His interdisciplinary approach in art practice explores the collaborative nature of making, questioning the idea of authorship, production, distribution of art, and its relationship to the audience. Conceptually, he is interested in questioning the process and politics of othering and its relation to accessibility. Coming from an indigenous background, his work investigates the politics of representation and power within the contemporary art discourse. His work allows him to articulate language for communicating and creating spaces for relationship building. He founded CASP—an arts-based non-profit that works through four chapters: Delhi, Mumbai, Kolkata, and Pune.

Brianna Ortega

Brianna Ortega is currently a candidate in the MFA in Art and Social Practice program at Portland State University, and holds a B.A. in Art Practices with a focus in psychology and family studies. She is the Director of Sea Together Magazine, a global project uniting and rewriting female surfing through art, writing, and community. She has been surfing for over a decade and has moved 26 times in her life, which ignites her passion to connect with people across oceans. Brianna uses art as a tool to explore relationships between identities and environments, through questioning the social and hierarchical

powers that define social constructs and spaces. Her work often uses social engagement throughout the process and creation. Projects manifest in the form of events, publications, performance, video, and conversations.

Carlos G. Reynoso (he, him, they)

Carlos Reynoso is a queer brown artist born in Mexicali Baja California and raised in Los Angeles. Carlos's work is a mixture of community organizing, storytelling, and cultural preservation. Carlos is currently a first year student in the Art and Social Practice MFA program at PSU. Carlos and Abram Banuelos are the co-curators of Mis Tacones, a contemporary intersectional taqueria and ongoing project in Portland Oregon. Mis Tacones was showcased at PICA's Time Based Arts (TBA) Festival in 2018.

Elijah Turner-Nelson

Elijah Turner-Nelson is an Imagination Academy Mentee and Martin Luther King Jr. Elementary School student who has exhibited work at KSMoCA and the Scammers and Schemes Conference: Totally Honest Bazar. An emerging artist in his own right, Elijah has produced illustrative, sculptural, wearable, and edible artworks throughout his career.

Eric John Olson

Eric John Olson (ericjohnolson.art) is an artist based in Seattle, WA. He collaborates with artists and community members to conduct research and co-create participatory projects. His recent work examines the themes of housing, displacement, embodiment, death, and aging. Last summer he worked with a community center summer youth program to interview elders and re-enact games from their childhoods in a neighboring park.

Harrison Park School

The Harrison Park School is a K-8 School that inspires success by providing a respectful environment which encourages high expectations. Through the gracious and unwavering support of Susan Nelson, Leah Dickey, Shanon Buffington, student artists, and the larger community at Harrison Park School, the 2019 Assembly catalogue and event kickoff have been uniquely touched by the imagination of young people living in the community.

Imagination Academy

The Imagination Academy (IA), founded by Artist Michael Bernard Stevenson Jr., facilitates events and activities for young people in order to cultivate and expand their imaginations. IA activities gather the ideas and inspirations of young people and creates a conduit that allows them to actualize their dreams. Projects offer opportunities for participants to practice skills and abilities with which they are unfamiliar, as well as work towards their self-stated goal. The process and subsequent community exhibitions contribute to the development of self confidence in each participant. Supporting and participating in the generation of work by young people, offers an investment in their learning how to express their best selves.

Jordan Rosenblum

Jordan Rosenblum works as an artist, designer, and educator. He employs non-traditional research and social engagement strategies to investigate how art and design can foster understanding and connectivity. He teaches as an adjunct instructor of design at Portland State University, and co-directs the RECESS! Design Studio, a graphic design studio with elementary school students, in affiliation with KSMoCA.

keyon gaskin

keyon gaskin prefers not to contextualize their practice with their credentials.

KSMoCA

The King School Museum of Contemporary Art (KSMoCA), is a contemporary art museum inside of Martin Luther King Jr. Elementary School in NE Portland, OR. Founded in 2014 by Portland State

University professors Lisa Jarrett and Harrell Fletcher, the project creates an unusual pairing between public school students and internationally renowned artists and their work. KSMoCA's programs are collaboratively developed with the MLK Jr. School community, PSU students, and a team of artists.

Students learn through experience about museum practice and careers in the arts by participating as curators, preparators, artists, gallerists, writers, and docents. KSMoCA reimagine the way museums, public schools, and universities can affect people, culture, and perspectives by creating radical intersections and sharing resources across organizations.

Artist Michael Bernard Stevenson Jr.

Artist Michael Bernard Stevenson Jr. is a black queer socially engaged artist, originally from the DC Metro area, who is currently completing their MFA at Portland State University in Oregon. They received their BFA in 2010 from the School of Art and Design at Alfred University in Upstate New York. While trained in traditional material studies during their undergraduate coursework, Michael's interest in environmentally sustainable food and living combined with their activist interest in social justice led them to social practice. Michael's practice has evolved as he sought to engage his local community with hopes of enacting positive social change. Since moving to Portland, Michael has exhibited work at KSMoCA, The TINY GALLERY, Show Motel Florida, Public Annex, Columbia River Correctional Institution, and PICA.

More Art

More Art is a 501(c)(3) non-profit organization that supports collaborations between professional artists and communities to create public art and educational programs that inspire social justice. Engaging Artists is More Art's fellowship program for NYC-based artists seeking to both develop and sustain their socially-engaged public art practice in collaboration with advocacy organizations, schools, coalitions, unions, groups of neighbors, and the public at large.

Mudland

Mudland is a collection of ideas and a collective of people dedicated to creating playful environments where children can explore on their own terms.

We believe in the child's right to time for unstructured play, and a personal and creative life that is self-directed.

Nola Hanson

Nola Hanson is an artist whose practice centers the role of embodiment in contemporary social systems. Nola is the founder of the Trans Boxing Collective; a trans-led organization and social practice project that facilitates inclusive and accessible boxing training for T/GNC/NB people. They are currently participating in More Art's 2018-2019 Engaging Artists Fellowship program. Nola is based in Brooklyn, New York.

Real Food, Faux Truck, Food Truck

Real Food, Faux Truck, Food Truck (RFFFTT) is a pop-up street food experience co-managed by young artists of mixed heritage and Artist Michael Bernard Stevenson Jr. The artist team works together to serve real food out of a masonite food truck facade.

Roshani Thakore

Roshani Thakore uses art to broaden an understanding of place, uncover histories, elevate voices, and expand a sense of belonging, all with the hope of shifting power. She is currently working with the Asian and Pacific American Network of Oregon (APANO) on a People's Art Plan of O82 for Orchards of 82nd, a new building opening in June 2019 at the intersection of SE 82nd Avenue and Division Street that will house APANO's headquarters, ROSE CDC, and 48 affordable housing units. In 2018, she completed her time as the Jade District Artist in Residence through the APANO and Division Midway Alliance Creative Placemaking Projects Grant with her project 82nd + Beyond: A Living Archive, and collaborated with Anke Schüttler and the Free Mind Collective for the project Answers Without Words, funded by the Portland Institute for Contemporary Art's Precipice Fund.

Roz Crews

Roz Crews was the Artist in Residence (AIR) at the University of Massachusetts Dartmouth (2017- 2018) where she founded the Center for Undisciplined Research, a nine-month public artwork sited on campus as a tool for people to critically examine

what and how they want to learn. She has recently exhibited solo projects at the New Genre Arts Festival at Living Arts in Tulsa Oklahoma, Corner Office in Richmond Virginia, the MK Gallery in Portland Oregon, Etiquette in Santa Fe New Mexico, and the Institut für Alles Mögliche in Berlin Germany.

Salty Xi Jie Ng

Salty Xi Jie Ng (saltythunder.net) is an artist, filmmaker and performance maker from the tropical metropolis of Singapore. Her interdisciplinary work explores possibilities in the poetic, eccentric and infinite everyday. She makes collaborative encounters that are intimate, semi-fictional paradigms for the real and imagined lives of humans. She is a founding member of Portland Tropical Gardens, and in 2016 she created The Grandma Reporter, a collaboratively-made publication on senior female culture.

Shoshana Gugenheim Kedem

Shoshana Gugenheim Kedem is an interdisciplinary artist, Torah scribe, curator and educator. She is occupied with questions about Judaism and patriarchy, ritual, feminism and gender gaps. Influenced by her studies in and work as an educator, Shoshana addresses ways of schooling and un-schooling and engages institutional critique as a practice of imagining new possibilities, often through publicly generated solutions. Her work reinvents traditional rituals, primarily, but not solely, Jewish ones, and reinserts them with new forms into familiar contexts. She is the newly appointed Chief Curator and Artistic Director of The Gugenheim Portland opening in 2019.

Spencer Byrne-Seres

Spencer Byrne-Seres is an interdisciplinary artist and arts administrator who creates experimental platforms for art and public research. As an artist, and graduate candidate in the PSU Art and Social Practice program, Spencer has created public projects in school cafeterias, fish hatcheries and libraries. Over the past three years, he has been a part of a team that established an Artist Residency program for incarcerated artists within a minimum security men's prison in Northeast Portland.

Takahiro Yamamoto

Takahiro Yamamoto is an artist and choreographer based in Portland. He has produced original performances and visual artworks nationally and internationally. He is a graduate from Pacific Northwest College of Art in MFA in Visual Studies. He co-directs the performance company madhouse with Ben Evans, and is a part of Portland-based support group Physical Education with Allie Hankins, keyon gaskin, and Lu Yim.

The Living School of Art

The Living School of Art (www.livingschoolart.info) is a living art project and artist collective led by neighbors in a large affordable apartment complex in East Portland, OR. Founded in 2016 by artist Amanda Leigh Evans, the project centers around our shared experiences in our apartment complex and the creative practices we bring through our cultures, families and life experiences. This includes maintenance, cooking, domestic crafts, building, dancing, gardening, storytelling and artmaking. As neighbors, we are both students and teachers in this project we shape together. The program includes rotating exhibitions in 8 laundry rooms, an artist residency program, visiting artist workshops, a collectively-lead women's art group, a youth art program and a community garden.

Tia Kramer

Tia Kramer (www.tiakramer.com) creates experiences that prioritize empathy and engages participants in collective meaning making. Her collaborative creative practice in site-specific performance, social choreography and creative pedagogy work toward equity, social justice and mindfulness in the world. Kramer's work has been supported by Seattle Art Museum Artist Residency, MadArt Studios, 4Culture, Artist Trust, Duwamish Revealed and Eichholz Foundation. Kramer studied at Macalester College and The School of the Art Institute of Chicago. She currently lives in Walla Walla, WA.

TINY GALLERY

TINY GALLERY is a project and exhibition space where artists collaborate with children. Installations feature children's perspectives by integrating young people into processes of curation, preparation, installation, and distribution. Co-founded by mother-and-son duo in 2016, Emma and Raymond Colburn co-curate TINY GALLERY to produce workshops and exhibitions in Portland and around the world.

Zeph Fishlyn

Zeph Fishlyn (zephrocious.com) is a multidisciplinary visual artist and activist dedicated to personal and collective storytelling as nonlinear tools for reinventing our world. Zeph's public projects, drawings, objects and installations nurture alternative narratives by questioning, dreaming, distorting, celebrating and demanding.



Portland State University MFA in Art + Social Practice

PSU's Art and Social Practice MFA is a 3-year, flexible residency program that combines individual research, group work, and experiential learning. The program's blend of critical and professional practice, progressive pedagogy, collaborative social engagement, and transdisciplinary exploration produces an immersive educational environment.

The 90 credit, 3-year course encourages students to shape the direction of their own education and continually develop the program as a whole. Students connect their art practice to research in the field of Social Practice through electives and community partnerships, promoting cross disciplinarily engagement. Graduating students each produce a public graduate project, an in-depth written text exploring a relevant connection to their practice, and a public artist lecture that surveys their work in the program.

The program accepts approximately five students annually. The deadline for applying is January. Interested persons are encouraged to make arrangements to visit the program.

PSUSOCIALPRACTICE.ORG/ASSEMBLY

**ART
+ SOCIAL
PRACTICE**
Portland State University